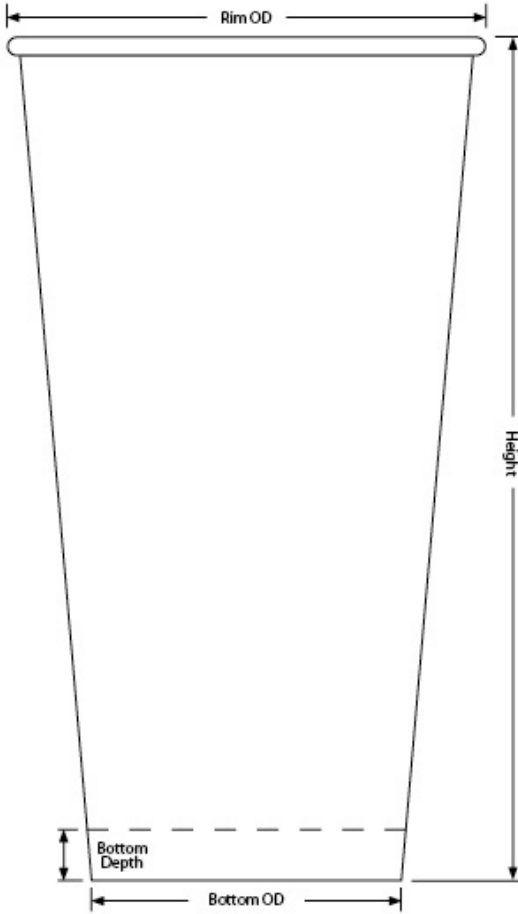




C932 32oz Drink Cup (32)

32oz Paper Cup-Double Poly



Capacity: 32.56oz / 963.00ml

Material: 18pt Paper, Poly 2-sides, FSC SFI PEFC Certified

Minimum: 500 pieces

Height: 7.269" \pm .015

Rim Height: 0.150" \pm .010

Rim OD: 4.124" \pm .010

Bottom OD: 2.665" \pm .010

Bottom Depth: 0.414" \pm .010

Shipping: FOB NV

32oz Drink Cup (32) available in [Double-Poly Paper](#)
[Plastic-Free Paper](#) [Clear Plastic](#)

C932 Standard Case Pack Configuration

Box Dimensions: 23.35"x15.75"x17.78"

Box Volume: 3.78 Cubic Feet

Box Weight: 28 lbs

Box Content: 500 Pieces

Pallet Dimensions: 40.00"x48.00"x94"

Pallet Weight: 745 lbs

Pallet Content: 12,500 Pieces / 25 Boxes

SEE LID OPTIONS ON LAST PAGE

Specifications to be used for the evaluation and purchase of Visstun® products only and are subject to change without notice.

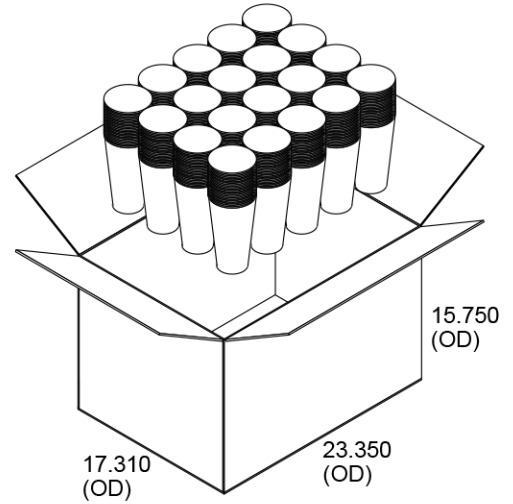
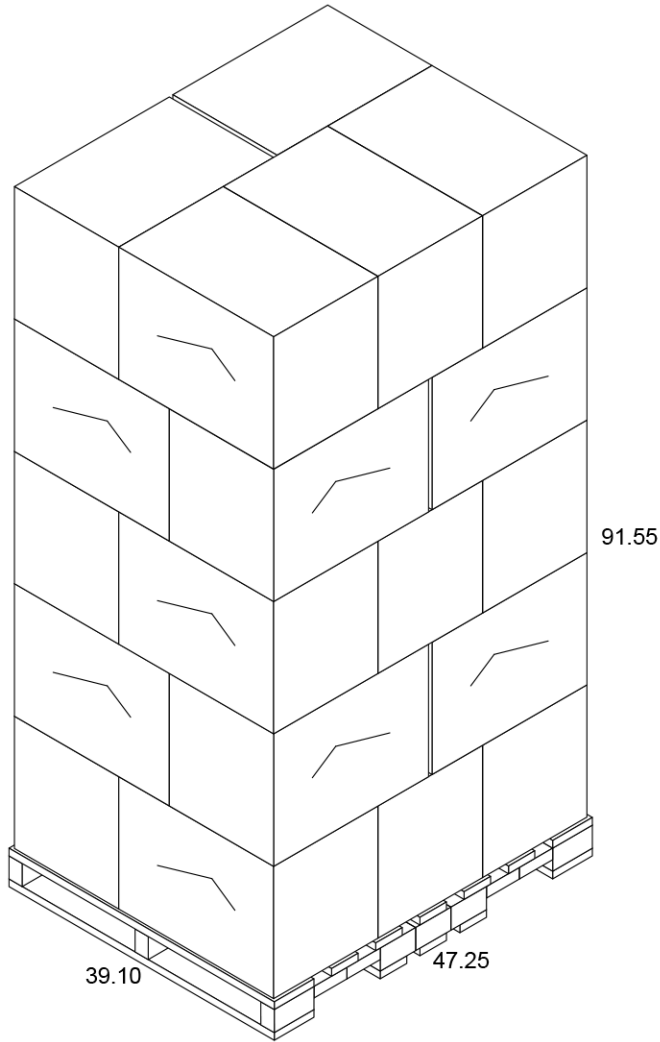
All orders are subject to 10% over to 10% under run.

VisstunPromo.com June 2026 Page 1/3

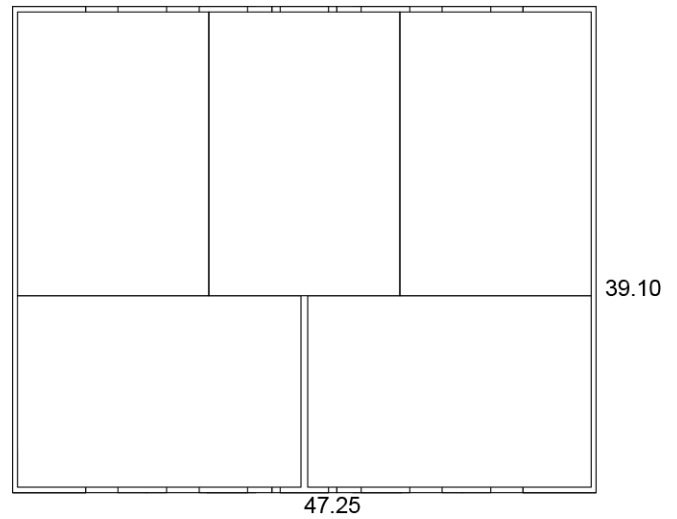
Pallet for C932 (Gloss), M932 (Matte)

32oz Paper Cup-Double Poly

Pallet View



Top View





Lid Options for C932 (Gloss), M932 (Matte) 32oz Paper Cup-Double Poly



Reusable Basic Lid

- Reusable, injection molded
- Black & white standard
- Available in red
- With straw slot
- Case: 1,000 - 17 lbs



Clear Single-Use Lid

- Clear, thermo-formed
- With straw slot
- Case: 1,000 - 10 lbs